

# Solar carports

## Practical use of *space and solar energy*

FIBRAIN Energy carports are extremely well-thought-out structures that, by being equipped with super-efficient glass PV panels, are the perfect match for modern construction.

- Polish independent manufacturer
- The only comprehensive energy management system on the market
- Modular system, compatible with most energy solutions
- In-house, customizable solution
- Effective data management (including electricity consumption data)
- Comprehensive support: installation and maintenance



**MANUFACTURED AND  
DEVELOPED IN POLAND**



**Perfect design, excellent  
construction**

- **Functionality and superior aesthetics**
- **Customization to customer individual needs**
- **Construction resistant to any conditions**

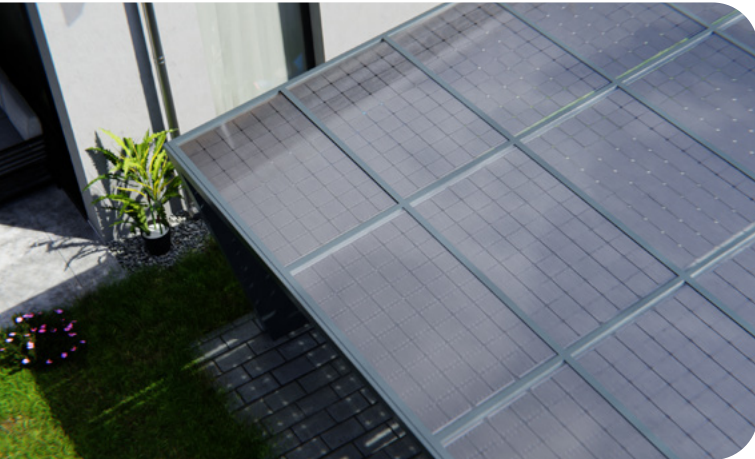
# Solar carports

## Practical use of space and solar energy



### Protection, water resistance and durability

Carport FIBRAIN energy provides complete protection against rain, snow and hail. As a result, no streaks remain on the car as is the case with standard panels. This reliable airtightness is achieved through the use of aluminium profile technology, familiar from glass skylights.



### Hail protection

Glass-to-glass panels made from two panes of toughened glass, so they have increased mechanical resistance to external influences such as hail.



### Security

We use specially reinforced glass, which undergoes a process of toughening and bonding through a laminated film. Regardless of the force of the impact, these panels do not shatter into splinters, guaranteeing absolute protection.



# Solar carports

## Practical use of space and solar energy

Guaranteed durability and safety

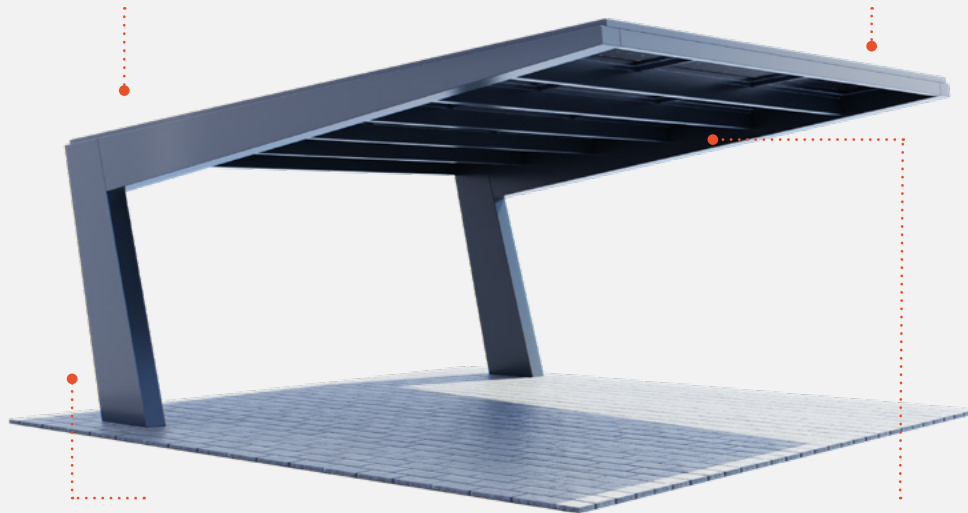
### Forever construction

#### Unbeatable quality

Carports are made of high-quality galvanized steel and powder-coated finish.

#### Easy to assemble

Bolt-on support structure for quick and relatively inexpensive installation. This reduces installation time and cost.



#### Easy parking

Thanks to the well-thought-out arrangement of load-bearing elements, parking and opening the vehicle's doors is extremely easy.

#### Resistant to any conditions

Reliable and robust design, meeting the highest standards of durability regardless of weather conditions.

# Solar carports

## L2Go Carport

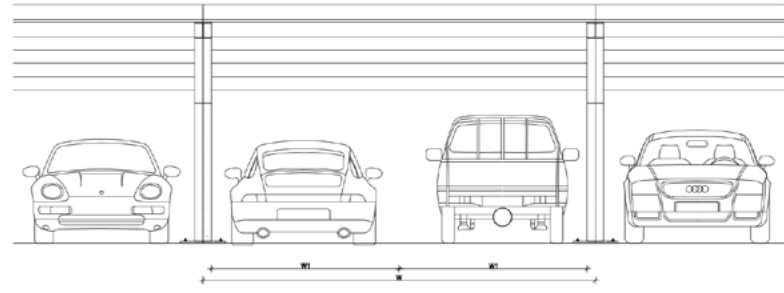
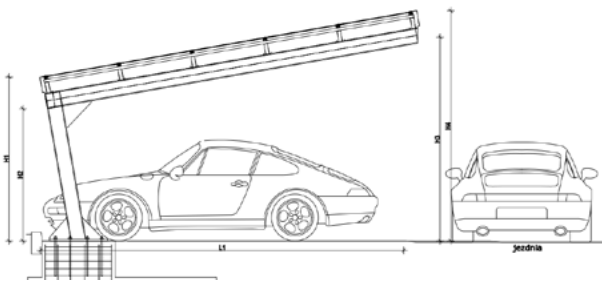
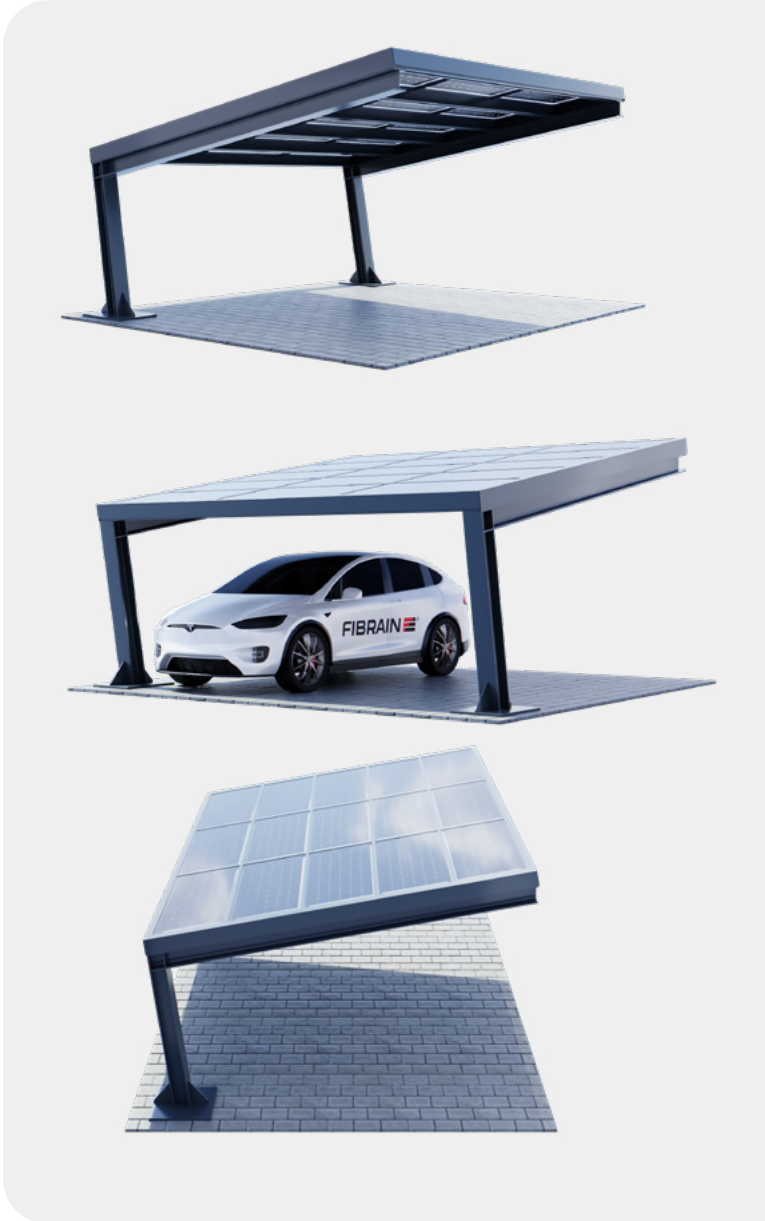
Proven design for 2 vehicles

TECHNICAL SPECIFICATION

Construction type	steel/aluminium
Number of parking spaces	2

PARAMETERS

L	5185 [mm]
L1	5000 [mm]
H1	2255 [mm]
H2	1820 [mm]
H3	2802 [mm]
H4	3165 [mm]
W	5200 [mm]
W1	2490 [mm]
Power rating	4.8 kWp
Panel type	glass-glass
Module dimensions	1710x1000 [mm]
Module weight	34.5 Kg
Single module power rating	320 Wp
Modules quantity	15
Tilt angle	5-10°







# The smartest PV system on the market

## Contact us

FIBRAIN Energy  
Headquarters

Innowacyjna 14 St.  
36-060 Głogów Małopolski, Poland

[energy.fibrain.com](http://energy.fibrain.com)